

DATE:	COMMENTS:
PROJECT:	

FEATURES

- Field-selectable 120 or 277 VAC input/output.
- 1X normally-on and 3X configurable normally-off/switched for 125VA and 250VA models. 1X normally-on and 4X configurable normally-off/switched output types for 375VA and 550VA models.
- Microprocessor controlled pure sine wave output with less than 3% THD and crest factor up to 10X (125VA), 5X (250VA), 7.5X (375VA), and 5X (550VA).
- Advanced startup and charger/inverter diagnostics prevent failures from wiring errors, overloads, and application issues.
- Front facing module allow for easy field wiring of AC input/output wires and all system connections/interfaces.
- Advanced hysteric ultra-efficient charger improves efficiency and extends battery lifetime.
- Approved by UL 924 and CSA 22.2.
- Includes self-testing/self diagnostics.
- Optional internal DALI/0-10V dimming interface allows for up to three (125/250VA) or four (375/550VA) independent zones and allows for five different dimming presets to adjust emergency lighting levels.
- High purity, premium valve regulated lead acid (VRLA) batteries with lead-calcium plates provide long life and durability.
- Max connected load with dimmer option is 375VA for the 125VA and 250VA models, and 1,125VA for the 375VA and 550VA models (non-EM mode).



CLICK THE IMAGE TO VIEW ALTERNATE PRODUCT PHOTOS
Only available with Adobe Acrobat and Acrobat Reader

ORDERING INFORMATION *E3MINI-125-LC-MB*

1. SERIES	2. VA RATING	3. BATTERY TYPE	4. MOUNTING	5. OPTIONS
E3MINI	-	LC	-	-
	125 125VA 250 250VA 375 375VA 550 550VA	LC Lead Calcium	MB Back Mount MCG Ceiling Grid ^{1,3}	BLANK = NO OPTION FD 0-10V/DALI Dimming & Fire Alarm Interface RT Remote Diagnostic Status Display Panel for Back Mount Inverters AA Audible Alarm (Buzzer) CL Canada Listed EB Extended Run Time (2h) ² Z4 Seismic Zone 4 Restraints

ORDERING NOTES

- Only available with 125VA unit.
- Capacity reduced to 100VA, 200VA, 300VA, and 440VA respectively.
- Remote Diagnostic Status Display Panel (RT) included with MCG mounting.

ACCESSORIES; ORDER SEPARATELY

- E3MINI-FPS** = E3MINI 125/250/375/550 Factory Phone Startup (per unit)
NOTE: INCREASES ELECTRONICS WARRANTY TO 5 YEARS
- TLRT** = Infrared Remote Control for Industrial Products

SPECIFICATIONS

INPUT

- Field-selectable 120 or 277 VAC input/output.
- Current: 1.4A (120V), or 0.6A (277V) for 125VA model.
- Current: 2.7A (120V), or 1.2A (277V) for 250VA model.
- Current: 4.10A (120V), or 1.19A (277V) 375VA model.
- Current: 5.95A (120V), or 1.98A (277V) 550VA model.
- Frequency: 60Hz +/- 2 Hz
- Protection: easy access 8A fast acting 5x20mm fuse.
- Power Factor: 0.5 lead to 0.5 lag

OUTPUT

- Voltage: 120 or 277 VAC and matches input selection.
- Current: 1.04A (120V), or 0.45A (277V) for 125VA model.
- Current: 2.08A (120V), or 0.9A (277V) for 250VA model.
- Current: 3.12A (120V), or 1.35A (277V) 375VA model.
- Current: 4.85A (120V), or 1.98A (277V) 550VA model.
- Frequency: 60Hz +/- 0.02 Hz crystal controlled during emergency mode.
- Overload: 110% will generate overload fault.
- Configurable Transfer Times: 50mS, 1s (default), or 2s
- Output Distortion: less than 3% THD
- Crest Factor: 10X for 125VA, 5X for 250VA, 7.5X for 375VA, and 5X for 550VA model
- Load Power Factor: 0.5 lead to 0.5 lag
- Output Types: 1X normally-on and 3X configurable normally-off/switched for 125VA and 250VA models. 1X normally-on and 4X configurable normally-off/switched for 375VA and 550VA models.
- Max Connected Load w/ Dimmer Option: 375VA for the 125VA and 250VA models and 1,125VA for the 375VA and 550VA models (non-EM mode).

BATTERY

- Type: premium long life valve-regulated lead acid (VRLA)
- Charger: three rate charger temperature compensation
- Recharge Time: 24 hour recharge
- Protection: automatic low voltage disconnect (LVD) set at 1.67 VPC.
- Automatic restart upon utility return.
- Runtime: 90 minutes at 25C°
- DC Voltage: 24 VDC nominal, 2.27 VPC float, temperature compensated
- DC Current: 6.12/12.4 ADC nominal (125/250VA Model)
- DC Current: 18.25/27 ADC nominal (375/550VA Model)

ENVIRONMENTAL

- Operating Temp: 20C° to 30C° (68°F to 86°F)
- Storage Temp: Electronics - 20C° to 70C° (68°F to 158°F)

BATTERY STORAGE TEMP	
51°F (11°C) TO 77°F (25°C)	180 DAYS
78°F (26°C) TO 92°F (33°C)	90 DAYS

- Relative Humidity: <95% (non-condensing)

PHYSICAL

- Cabinet: NEMA Type 1 enclosure with 16 AWG powder painted CRS.
- Cooling: natural convection - no fans
- Electrical knockouts (EKO's) for 1/2" and 3/4" conduit provided on three surfaces.

WEIGHT

- 125VA: 33 lbs.
- 125VA T-Bar: 38 lbs.
- 250VA: 68 lbs.
- 375VA: 100 lbs.
- 550VA: 120 lbs.

APPROVALS

- UL 924 certified
- New York City approved, Calendar Number 51575
- NFPA101 Life Safety Code
- NFPA70-NEC
- OSHA certified
- NEMA Type 1 enclosure
- NEMA 410 load tested up to 375VA (125/250VA Model) and 1,125VA (375/550VA Model).

WARRANTY

- Isolite warrants the E3 Series electronics assembly against defects in material and workmanship for a period of 3 years.
- Isolite warrants the lead calcium batteries for 3 years full and 7 years pro-rata limited.
- For further details, refer to General Warranty and Obligations in the Isolite manual or on our website.

FRONT PANEL

NEU

LINE

CMD 1

CMD 2

CMD 3

N-ON

OUT 1

OUT 2

OUT 3

AC INPUT
12 - 16 AWG

Replace only with little fuse 0477008.MXP

Charger Faults	Inverter Faults	Startup Faults
<ul style="list-style-type: none"> 1/ Over-Temperature 2/ Voltage Select Jumper 3/ AC Fuse 4/ Charger/Inverter 	<ul style="list-style-type: none"> 1/ Over-Temperature 2/ Voltage Select Jumper 3/ Back-feed 4/ Overload 5/ Inverter 	<ul style="list-style-type: none"> 1/ Incorrect AC 2/ Voltage Select Jumper 3/ Transformer Wiring 4/ Low Battery 5/ Overload 6/ Inverter 7/ Back-feed

● LED 1 ● LED 2 ● LED 1 & 2

⚡ Red LED Strobe Qty. = Fault Type

Replace only with little fuse 0297025.WXN

DC FUSE-25A

The Emergency Lighting Experts

● Chg. ● Inv. ● SYSTEM TEST ●

NORMAL OPERATION

- AC Present / Float Charging
- AC Present / Bulk Charging
- Emergency Power ON
- Reduced Battery Capacity
- 10% Load Change

Emergency 0-10 / DALI Dimmer Interface

TEST

20% 100%

DIM ADJ.

OUT 1

TEST

20% 100%

DIM ADJ.

OUT 2

TEST

20% 100%

DIM ADJ.

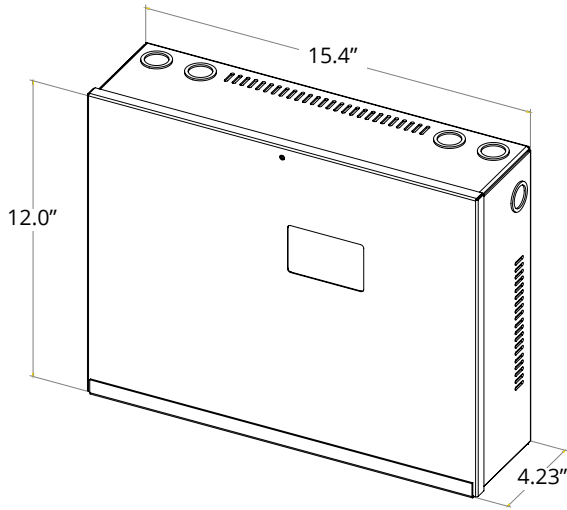
OUT 3

ON OFF

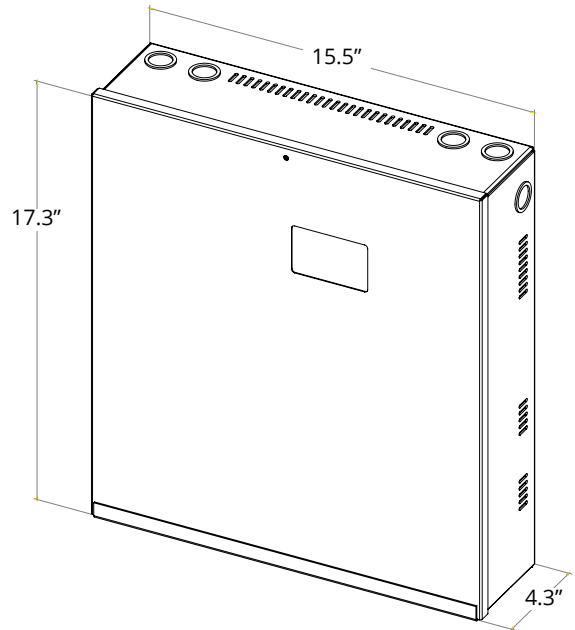
REMOTE

DIMENSIONS

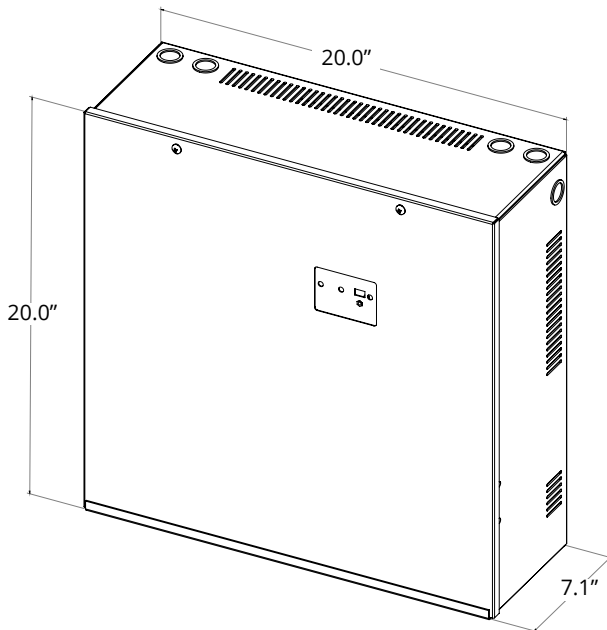
E3MINI 125W



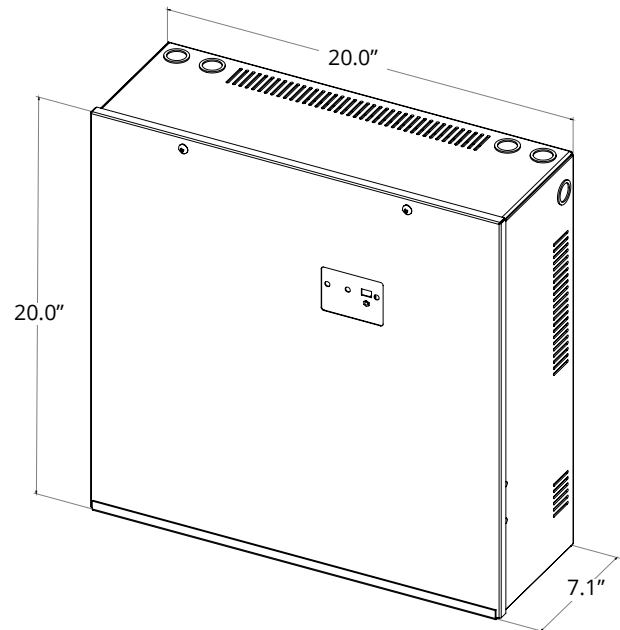
E3MINI 250W



E3MINI 375W



E3MINI 550W

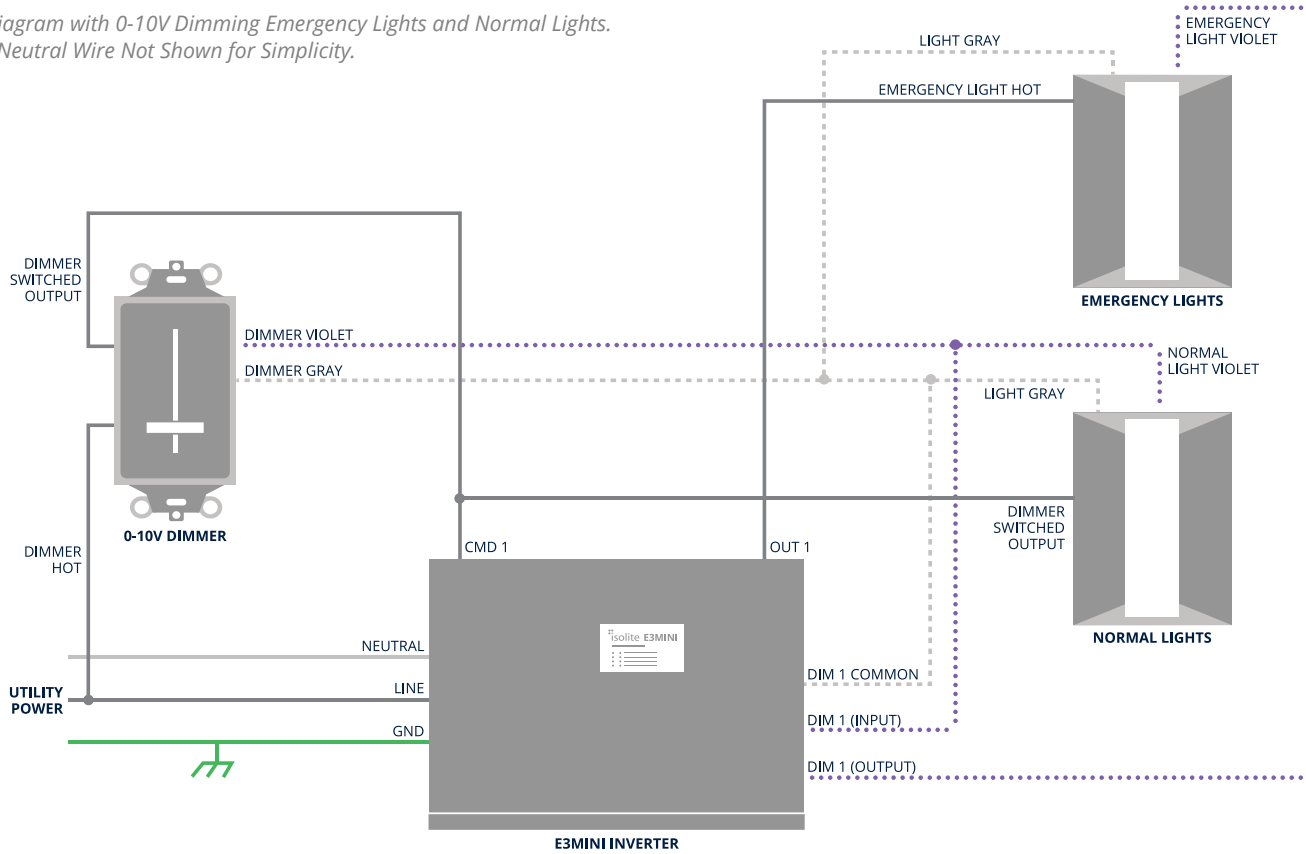


WEIGHTS

MODEL	WEIGHT
125	33 lbs.
125 T-Bar	38 lbs.
250	68 lbs.
375	100 lbs.
550	120 lbs.

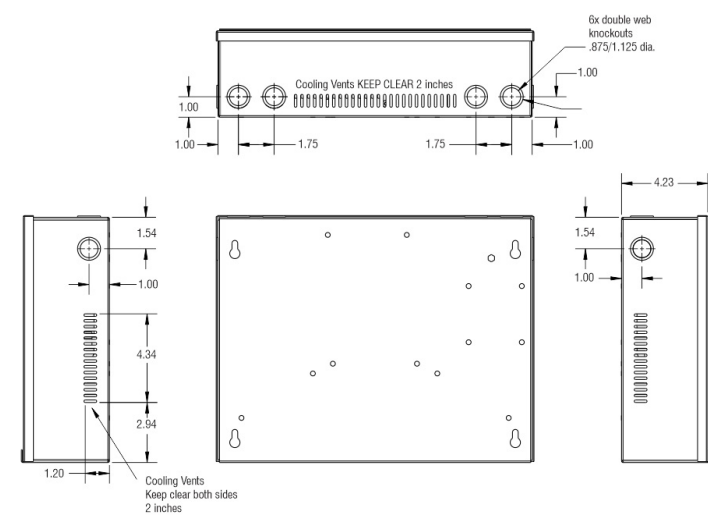
MINI INVERTER WITH DIMMING INTERFACE OPTION

Wiring Diagram with 0-10V Dimming Emergency Lights and Normal Lights.
Lighting Neutral Wire Not Shown for Simplicity.

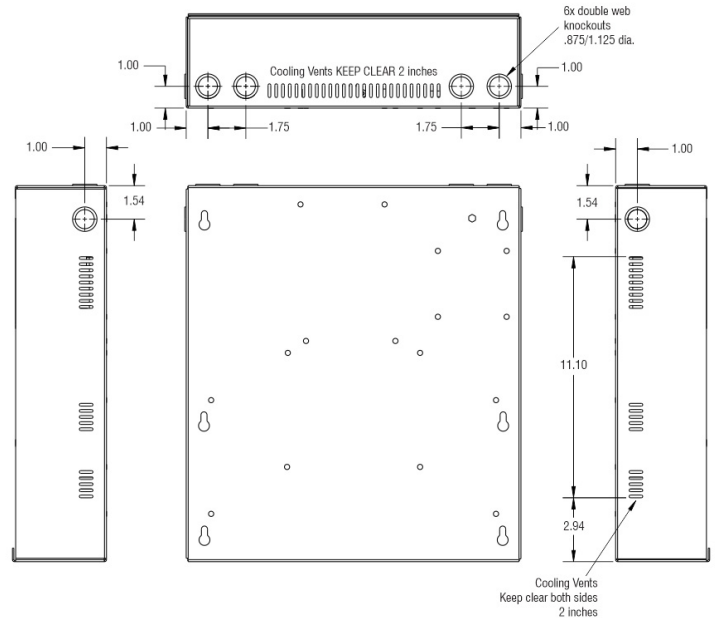


KNOCKOUT LOCATIONS

E3MINI 125W

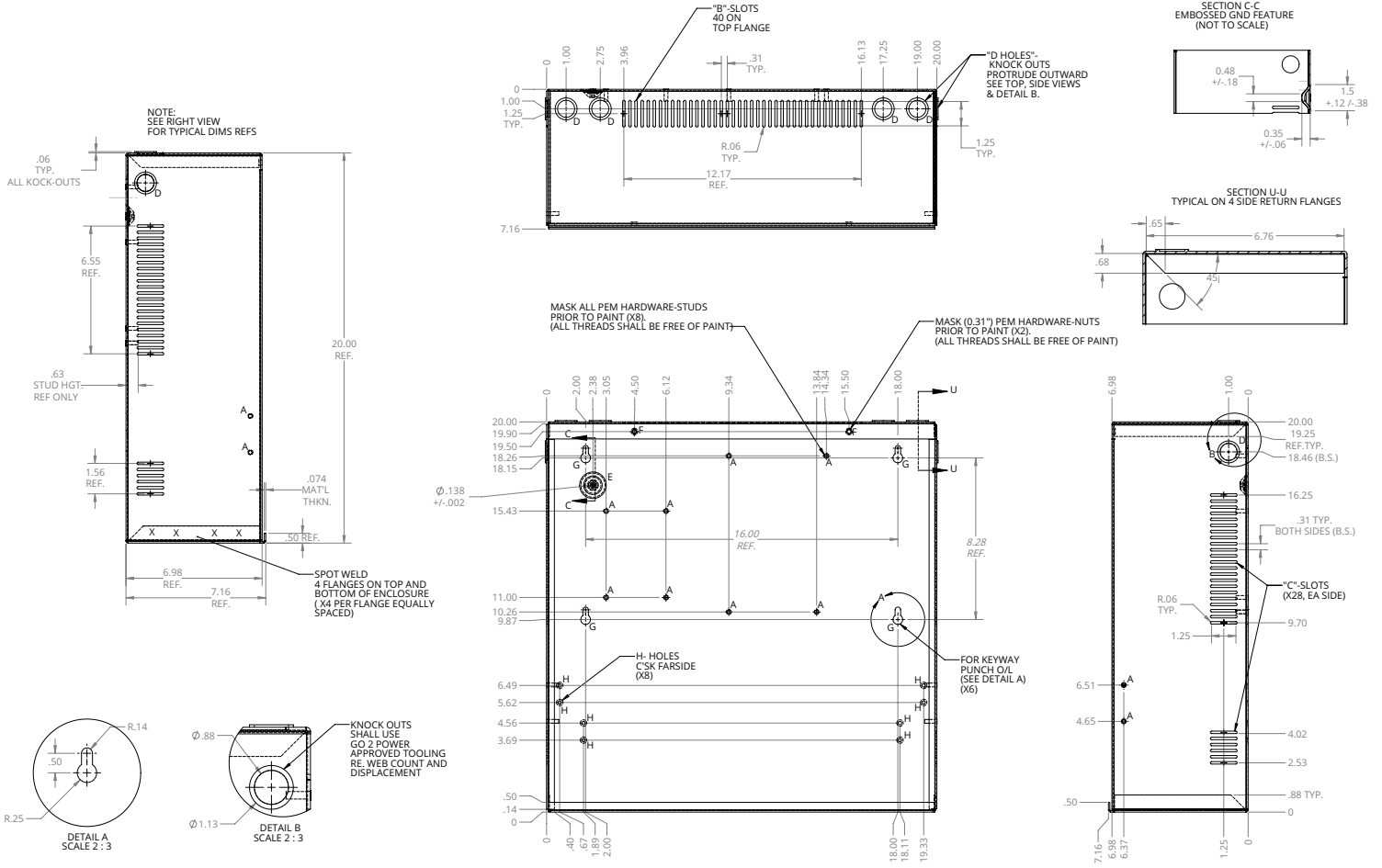


E3MINI 250W



KNOCKOUT LOCATIONS (CONTINUED)

E3MINI 375W / 550W



CEILING GRID MOUNTING

